



ELSEVIER

Available online at www.sciencedirect.com

Review of Palaeobotany and Palynology xx (2007) xxx–xxx

**Review of
Palaeobotany
& Palynology**

www.elsevier.com/locate/revpalbo

A palaeoecological interpretation of the lower–middle Pleistocene Cal Guardiola site (Terrassa, Barcelona, NE Spain) from the comparative study of wood and pollen samples

José María Postigo Mijarra^{a,*}, Francisco Burjachs^b,
Fernando Gómez Manzaneque^a, Carlos Morla^a

^a *Dpto. de Silvopascicultura, Unidad de Botánica, Escuela Técnica Superior de Ingenieros de Montes, Universidad Politécnica, Ciudad Universitaria, E-28040 Madrid, Spain*

^b *Institució Catalana de Recerca i Estudis Avançats (ICREA)- Àrea de Prehistoria, Universitat 'Rovira i Virgili' (URV), Plaça Imperial Tarraco 1, E-43005 Tarragona, Spain*

Received 19 September 2006; received in revised form 29 March 2007; accepted 4 May 2007

Abstract

The Cal Guardiola site, discovered during the construction of an office building in the centre of Terrassa (Province of Barcelona, NE Spain), is home to one of the richest deposits of lower–middle Pleistocene flora in the Iberian Peninsula. The site contains a large quantity of plant macroremains, including non-carbonised wood, in an exceptional state of preservation. In this work, 100 wood fragments were analysed along with 25 pollen samples and 2 coprolites, all from the same horizon. These remains revealed the presence of a mixed deciduous forest with significant numbers of *Quercus* (*Quercetum mixtum*). Thermophilous, meso-hydrothermophilous and river forest species were also present, including some taxa rarely recorded for the Pleistocene, e.g., the mesocratic group of species represented by *Juglans*, *Carya* and *Platanus*. Fossil wood of *Aesculus* was also identified; this is the first Pleistocene reference of this species in Iberia. In this open Mediterranean forest, several remarkable gymnosperms were present. For example, *Pinus haploxylon*-type pollen was identified, demonstrating the survival of this group of conifers during the lower Pleistocene in the Iberian Peninsula. Pollen of Taxodiaceae was also found — the first reference of this family for the Iberian Pleistocene—showing these taxa survived on the Peninsula until the lower–middle Pleistocene transition. Warm-temperate and humid conditions prevailed during this interval; clear indications of an interstadial episode were observed.

© 2007 Elsevier B.V. All rights reserved.

Keywords: lower–middle Pleistocene; fossil wood; pollen; Iberian Peninsula, Taxodiaceae

1. Introduction

The construction of a building in the centre of Terrassa (Province of Barcelona, Spain) unearthed a large quantity of plant macroremains from the lower–middle Pleistocene transition; this was named the Cal Guardiola site. This site contains large amounts of non-carbonised wood mixed with the remains of fauna (bones

* Corresponding author.

E-mail addresses: jpom0007@ficus.pntic.mec.es

(J.M. Postigo Mijarra), francesc.burjachs@urv.cat (F. Burjachs),

fernando.gmanzaneque@upm.es (F. Gómez Manzaneque),

carlos.morla@upm.es (C. Morla).

and coprolites) and a small number of seeds, leaves and phytoliths. The wood shows signs of biodegradation, carbonification, taphonomic distortion and, in some cases, pyritization. However, the tissues are well preserved and the absence of mineralisation allows the wood to be classified as duripartially preserved (Schopf, 1975) or preserved in a basically unaltered state (Spicer, 1991).

The age and the quantitative and qualitative richness of its materials render it one of the best Iberian Pleistocene sites. In fact, no similar site exists in Spain. However, its macroremains can be compared to those of the Tertiary fluvial sediments of Caranceja (northern Spain) (Alcalde Olivares et al., 2004) and those found in lignite mines in central Europe (Schloemer-Jäger, 1960; Huard and Lavocat, 1963; Van der Burgh, 1964; Huard and Klingebiel, 1965; Huard, 1966; Huard, 1967; Kilpper, 1967, 1968a,b,c; Van der Burgh, 1973; Huard, 1974; Van der Burgh, 1983; Minnigerode, 1986; Figueiral et al., 1999). The analysis of the Cal Guardiola macroremains was complemented by pollen studies.

This site is a source of essential information on a less well known period of the early Pleistocene. Little information is available on either the dynamics or the characteristics of the Pliocene–Pleistocene, lower Pleisto-

cene or middle Pleistocene flora. The accurate dating of deposits is often technically difficult and the data obtained fragmentary. The most important studies performed to date in this area have been those of Andrade (1944), Elhà (1966), Diniz (1972), Teixeira and Pais (1976), De Deckker et al. (1979), Geurts (1979), Julià and Villalta (1984), Antunes et al. (1986), Leroy (1987), García Antón (1989), García Antón and Sainz Ollero (1991), Leroy (1997) and Martín-Arroyo (1998). The present work is the first to be performed with a large number of non-carbonised wood specimens from the lower–middle Pleistocene in Europe, and which contrasts macro- and microfossil data.

Samples were dated by palaeomagnetic analysis at the Jaume Almera Institute (C.S.I.C.), Barcelona. Magnetostratigraphic analysis clearly situated them below the Brunhes–Matuyama geomagnetic boundary, i.e., they are over 0.78 Ma of age (J.M. Garcés, pers. com.). Micro-mammal remains such as *Mimomys savini* Hinton or *Allophaiomys burgondiae* Chaline suggest the age of the Cal Guardiola site to be between 1.2 and 0.8 Ma.

The aim of this work was to reconstruct the palaeoenvironment of the Cal Guardiola site from the examination of its fossil wood and pollen content, comparing the results obtained in both analyses.

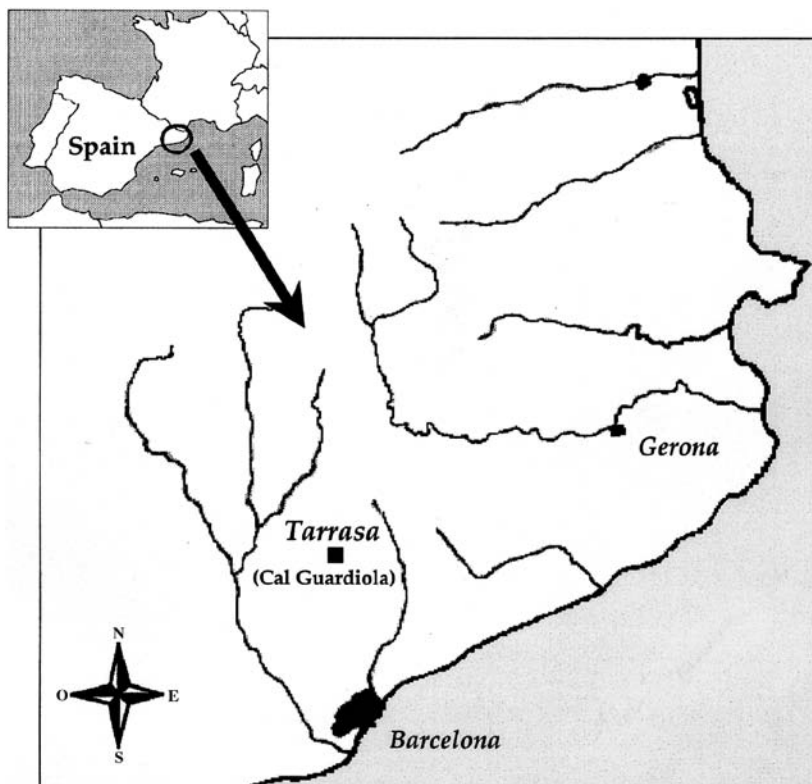


Fig. 1. Location of the Cal Guardiola site in Catalonia (Iberian Peninsula).

2. Study area

The Cal Guardiola site is located in the municipality of Terrassa in northeastern Spain, about 25 km northwest of Barcelona and west of the River Vallparadís (geographical coordinates 2°00'40" W, 41°34'6" N, UTM 31TDG1702; altitude c. 310 m; Fig. 1). It lies in the tectonic trough of the Vallés-Penedés region, which forms part of the NE–SW–aligned Costero–Catalana Mountains, a range some 250 km long.

Geologically, the relief of the area is strongly defined by the fault system generated during the pre-orogenic (Mesozoic) and compressive (Palaeogene) phases. The depressions produced were subsequently in-filled with dissimilar materials during the Neogene (Fig. 2).

Lithologically, these sedimentary materials consist of continental facies (mainly argillites, sandstones and puddingstones) laid down under conditions similar to those that reigned during the Vindobonian, the deposits of which they overlie. Along the Vallés depression, deposits of quaternary materials can be found. These might be associated with the terraces of the rivers Cardoner, Segre, Llobregat and Besós (Gutiérrez Elorza, 1994).

From a stratigraphic point of view, the Cal Guardiola site comprises a 5.5 m thick sequence containing a set of sedimentary bodies, mostly gravels showing little granulometric selection. These are the result of successive alluvial fans alternating with sedimentary units due to water moving at different flow rates (Berástegui et al., 2000). Four main sedimentary bodies can be differentiated. The

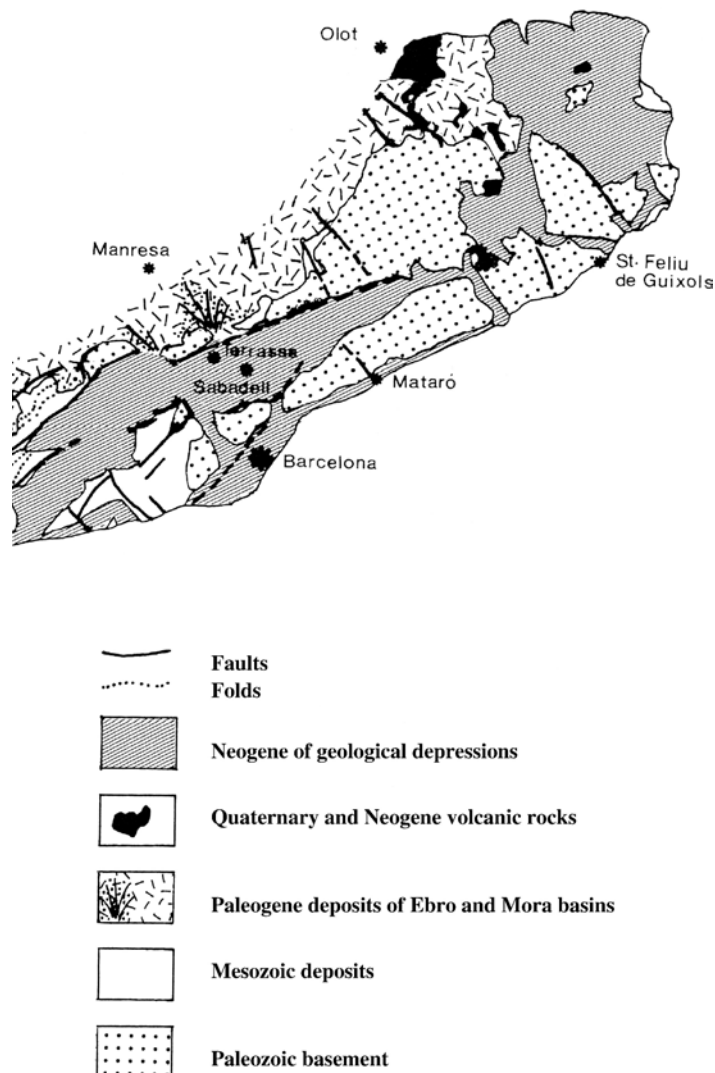


Fig. 2. Tectonics of the eastern zone of the Costero–Catalana Mountains (modified from Sala, 1994).

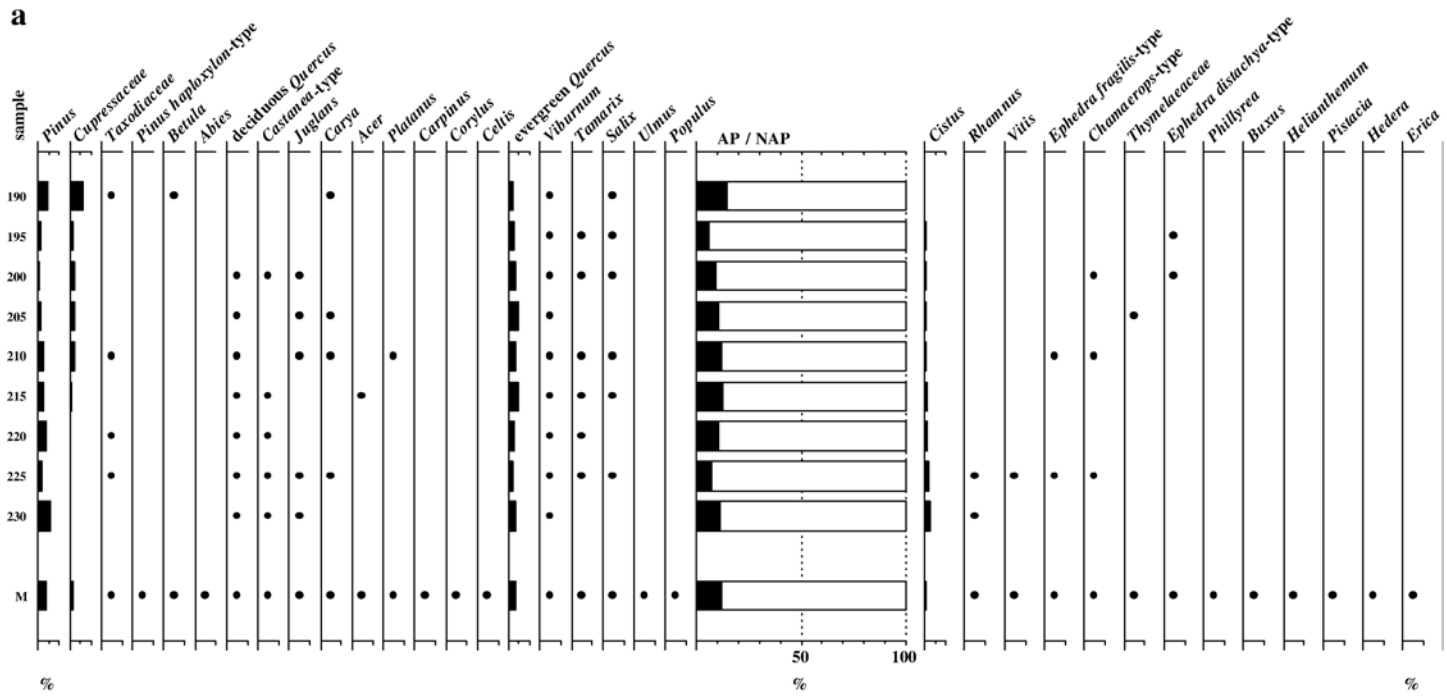


Fig. 3. Composite pollen diagram of the Cal Guardiola site. The sample numbers correspond to one of the sections analysed (S1), while ‘M’ corresponds to the mean for all the samples analysed from level D2 ($n=27$). 3a: Tree and shrub taxa. 3b: Herbaceous taxa, hygrophytes and Pteridophytes.

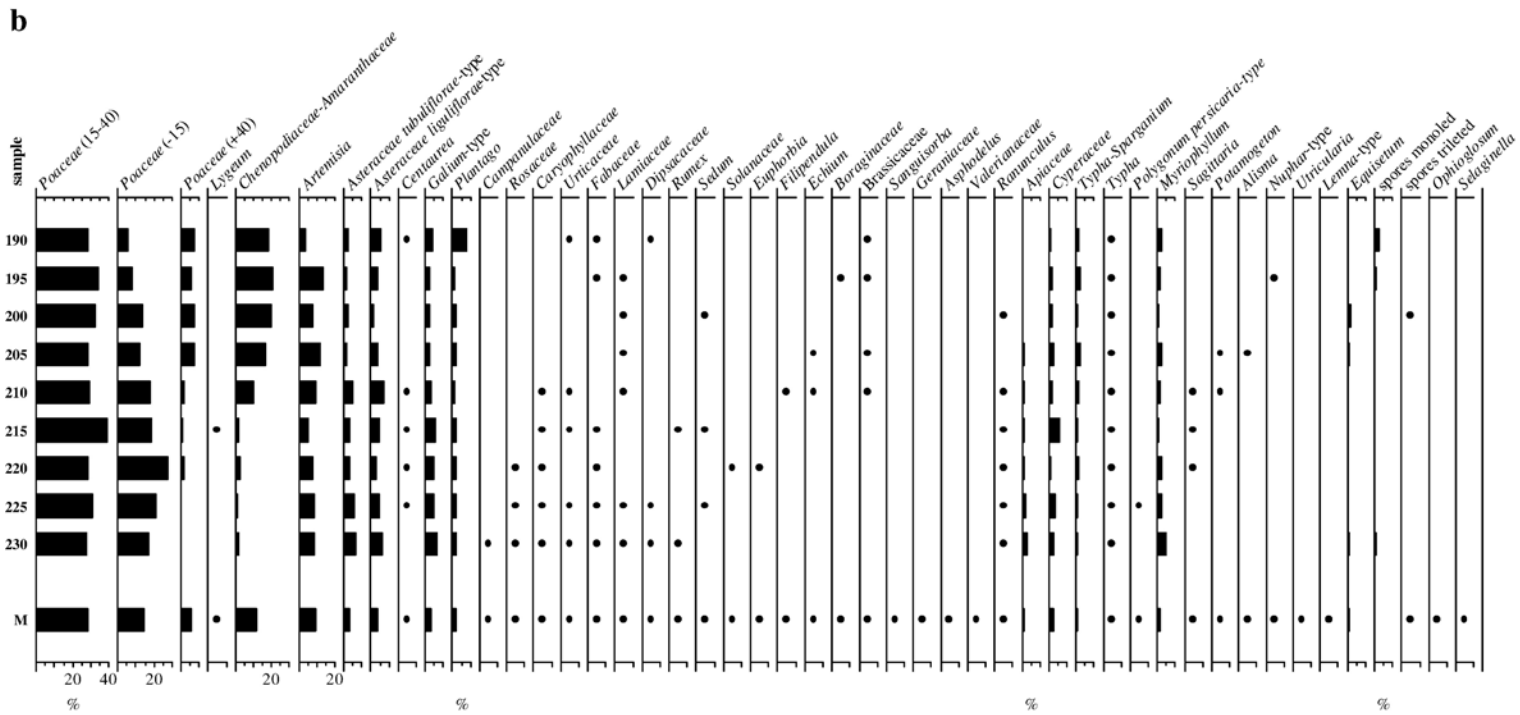


Fig. 3 (continued).

lowermost is situated over the Upper Miocene (Tortonian) series and appears to have been shaped by water flows of varying intensity. Upon this lies a stratum made up of sediments generated by a high-intensity alluvial fan. A subsequent phase involved an environment which gave rise to the main sedimentary unit: Level D2. This level was home to chaotically distributed wood, coprolites and other macroremains, which suggests they were subject to a debris-flow event and that all were deposited in a short period of time. They later would have undergone necro-kinesis and fossil-diagenetic processes. Pollen was also extracted from this level and analysed. The results of this and the wood analysis, however, can only be interpreted from the point of view of the presence and numbers of taxa; they should not be interpreted from a sequential point of view given the likely deposition method. The following sedimentary units indicate the continuation of sedimentation (although the water flow appears to have been less intense) with a reduction in the gravel fraction.

3. Methods and materials

An archaeopalaeontological excavation was undertaken over an area of some 691 m². Wood and pollen samples were collected from different sections of level D2, the thickness of which varied from 40 to 120 cm. This sampling of wood and pollen samples was undertaken at the excavation site by a team from the *Miquel Crusafont Palaeontological Institute* and the *Universitat Autònoma de Barcelona* during 1997. All fossils were collected from *in situ* resting sites. The same kinds of pollen and wood were found all over level D2.

3.1. Wood analysis

The wood samples – tainted black by the sediments – were all collected from the aforementioned Level D2. All had been preserved under anoxic conditions. This level houses a very diverse series of animal remains, some showing partial anatomical connections. Plant fossils are also abundant. Pieces of wood were obtained from large trunks and even twigs, etc. Most of the fragments were strongly compressed, which led to frequent problems during microscopic analysis.

One hundred wood fossils were analysed using traditional micrographic techniques (Schweingruber, 1978; De Palacios, 1997). Fragments measuring approximately 1 × 1 × 2 cm were processed with a microtome to provide thin sections approximately 15–20 μ thick. These were placed in a watch glass containing distilled water, stained with safranin, and then washed with distilled water and alcohol. They were

then submerged in xylol. A few drops of a *Euquit* fixer were then added and the samples observed under transmission light microscopy using an Olympus B × 50 series optical microscope equipped with UIS lenses (magnification × 50, × 100, × 200 and × 500).

To identify the wood samples, anatomical studies were performed according to Greguss (1947), Jacquot et al. (1973), García Esteban and Guindeo Casasús (1990), and Schweingruber (1990). All samples were compared to those in reference collections of extant wood belonging to the *U.D. Botànica* and *U.D. Tecnologia de la Madera* of the *Escuela Técnica Superior de Ingenieros de Montes, Universidad Politécnica de Madrid* (Spain). The studied samples were finally deposited with the *Servei d'Arqueologia de la Generalitat de Catalunya* (Barcelona) and the *U.D. Botànica* of the *Escuela Técnica Superior de Ingenieros de Montes, Universidad Politécnica de Madrid* (Spain). Four samples could not be assigned to a specific taxon owing to their state of preservation.

3.2. Pollen analysis

Sixty pollen and 18 coprolite samples were analysed. Of these, only 25 pollen samples and two coprolite samples (all from level D2) provided good results (Burjachs, *in press*). Three profiles were seen in different parts of the excavated area: S1 (which provided nine samples), P68 (seven samples), profile 25–35 (six samples). Single samples were also taken from three other profiles (profiles 3–8, 34–39 and 37–42). Fig. 3a shows the pollen counts for these profiles, and for those of the coprolites ('M' = mean pollen count for level D2). Each sample was prepared for analysis following the method of Goeury and Beaulieu (1979), as modified by Burjachs (1990) in accordance with the proposal of Girard and Renault-Miskovsky (1969) (Burjachs et al., 2003). The basic pollen count included all pollen except that of aquatic plants (Cyperaceae, *Typha–Sparganium*, *Typha*, *Myriophyllum*, *Polygonum persicaria*-type, *Alisma*, *Sagittaria*, *Nuphar*-type, *Lemna*-type, *Utricularia* and *Pteridophyta*). The pollen diagram was plotted using TGWiev v. 2.0.2 software (Grimm, 2004). The pollen samples were identified using the classic works of Moore et al. (1991) and Reille, (1995, 1998, 1999) as an aid.

4. Results

4.1. Wood identification

Table 1 shows the identification analysis results of the 100 non-carbonised wood fragments. These

Table 1
Taxa found in the Cal Guardiola deposit

Taxa	% Wood	% Pollen	Pollen number
<i>Acer</i> aff. <i>pseudoplatanus</i>	19		
<i>Quercus</i> subgen. <i>quercus</i> deciduous <i>Quercus</i>	16	4.6	59
<i>Aesculus</i> aff. <i>hippocastanum</i>	15		
<i>Ulmus</i> sp.	14	1.3	16
<i>Acer</i> aff. <i>campestre</i>	8		
<i>Fraxinus</i> aff. <i>angustifolia</i>	7		
<i>Populus</i> sp.	4	0.2	3
<i>Salix</i> sp.	2	1.7	22
<i>Ligustrum vulgare</i>	2		
<i>Phillyrea</i> sp.		0.5	6
<i>Acer</i> sp.	2	1.6	22
<i>Cornus sanguinea</i>	2		
<i>Quercus</i> sp. evergreen <i>Quercus</i>	2	24.0	307
<i>Viburnum opulus</i>	1	4.1	52
cf. <i>Fraxinus</i>	2		
<i>Pinus</i> sp.		25.4	324
<i>Pinus</i> type <i>haploxyton</i>		0.4	5
Cupressaceae		12.2	156
Cistaceae		5.9	75
<i>Tamarix</i> sp.		3.5	45
<i>Castanea</i> -type		3.3	32
<i>Ephedra</i> sp.		1.9	24
<i>Abies</i> sp.		1.8	23
<i>Juglans</i> sp.		1.2	15
<i>Carya</i> sp.		1.0	13
<i>Rhamnus</i> sp.		0.9	12
<i>Buxus</i> sp.		0.9	11
<i>Vitis</i> sp.		0.8	10
Taxodiaceae		0.6	8
<i>Chamaerops</i> -type		0.5	6
<i>Hedera</i> sp.		0.4	5
<i>Celtis</i> sp.		0.2	3
Thymelaeaceae		0.2	3
<i>Pistacia</i> sp.		0.2	3
<i>Erica</i> sp.		0.2	2
<i>Betula</i> sp.		0.2	2
<i>Carpinus</i> sp.		0.1	1
<i>Platanus</i> sp.		0.1	1
<i>Corylus</i> sp.		0.1	1
Identifiable	4		

For each one, number and percentage of ligneous pollen grains and percentage of woody remains are shown.

belonged to 11 taxa (all angiosperms) covering seven families. The main diagnostic characteristics observed for each sample are also shown.

Angiosperms

Fagaceae

Quercus subgenus *Quercus* (Plate I, 1–2)

Description: Transverse section (Tr.S.): Growth ring boundaries distinct. Ring-porous with 2 to 3 rows of pores in the earlywood. Average tangential vessel

diameter 150–250 μ . Latewood pores solitary or in radially orientated groups. Pore size transition from the early-to the latewood zones abrupt. Tyloses in vessels frequent. Libriform fibres, thick-walled and paratracheal parenchyma present. Tangential section (Tg.S.): rays uni-to multiseriate. Uniseriate, homogeneous rays up to 200 μ in height. Average multiseriate, heterogeneous rays 250–300 μ wide. Septate fibres present. Radial section (R.S.): simple perforation plates. Intervessel pits alternate, often with oval apertures. Spiral thickenings absent.

Identification: Based on anatomical features the samples belong to the genus *Quercus* (Greguss, 1947; Jacquot et al., 1973; García Esteban and Guindeo Casasús, 1990). The conspicuous growth rings and the abrupt pore size transition from the early-to the latewood are typical of *Quercus* subgenus *Quercus* (Schweingruber, 1990). According to García Esteban and Guindeo Casasús (1990), none of the samples could be assigned to *Quercus robur* or *Q. petraea* because of the high average tangential vessel diameter (350–450 μ) of the earlywood. In addition, *Q. petraea* has multiseriate rays 400–450 μ wide. *Quercus robur*, has uniseriate rays up to 350–400 μ in height, features also absent in the samples. The earlywood of *Q. pyrenaica* has an average tangential vessel diameter of 280–350 μ , and an average uniseriate ray height of 250–400 μ ; neither of these characters was observed. *Quercus faginea* Lam., *Q. humilis* Miller and *Q. canariensis* Willd., show strong uniformity in their wood anatomy and are impossible to distinguish from one another at this level. The fossil samples with the above-mentioned anatomical characteristics were therefore assigned to this latter group of species.

Hippocastanaceae

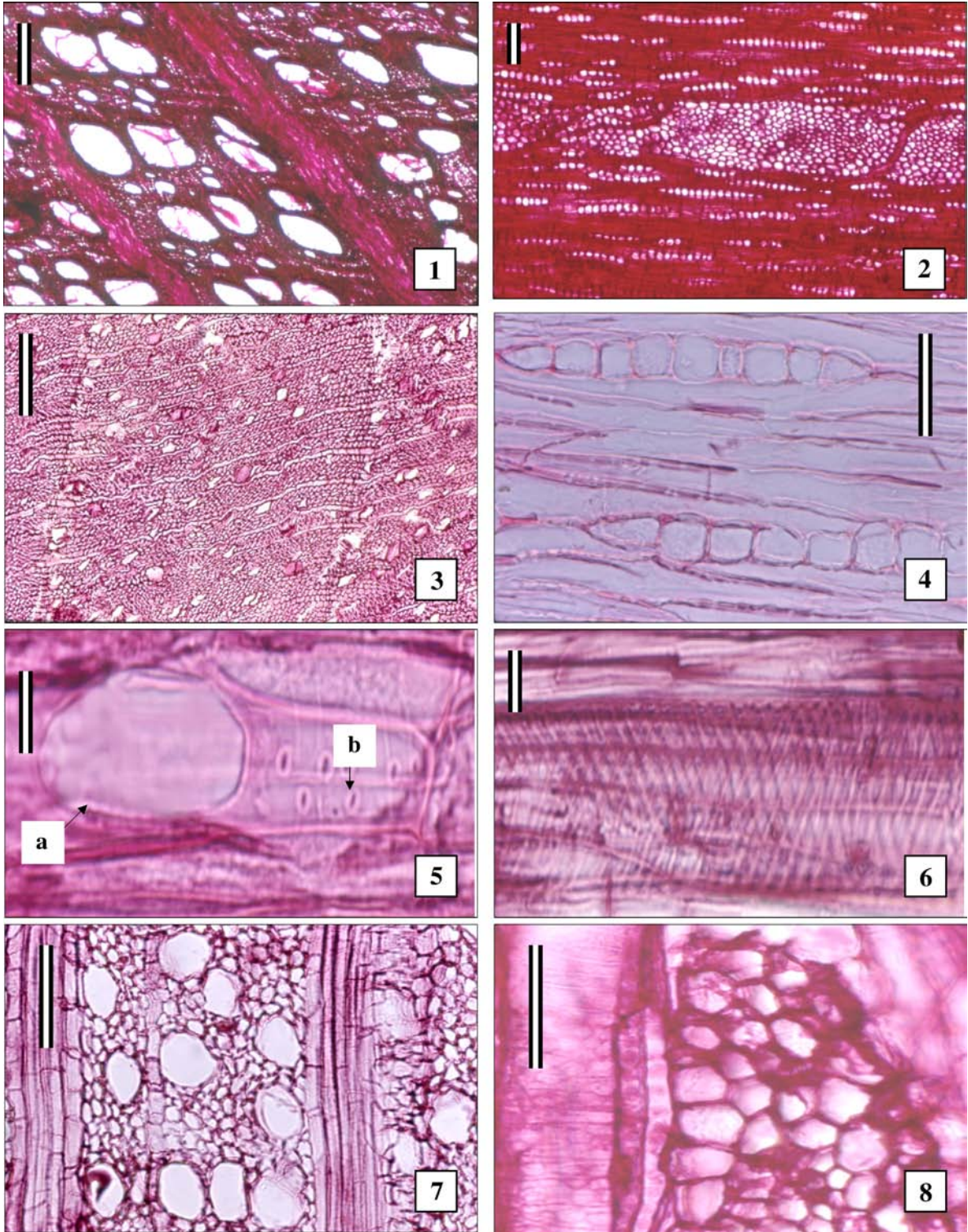
Aesculus aff. *hippocastanum* L. (Plate I, 3–6)

Description: Tr.S.: well-defined growth rings, diffuse-porous. Pores are solitary or in radial rows of 2–4 (sometimes 5) elements. The average diameter of the earlywood pores 30–40 μ , 20–25 μ in the latewood. Pits simple with a hexagonal areola. Tyloses occasionally present in vessels. R.S.: homogeneous rays and simple perforations present. Fine, spiral thickenings in vessels. Libriform fibres present. Tg.S.: strictly uniseriate rays, with an average height of between 2 and 20 cells. Average ray height 200–300 μ .

Identification: Some of the samples examined might belong to the genus *Aesculus* (Greguss, 1947; Jacquot et al., 1973; García Esteban and Guindeo Casasús, 1990; Schweingruber, 1990). Since comparative anatomical wood studies of the representatives of this genus are not available, no accurate discrimination

based on anatomical studies is possible. However, the distribution and representation of *Aesculus* in the Tertiary and Pleistocene strongly suggests the samples

belong to *A. aff. hippocastanum*, which is nowadays restricted to the Balkans. Given this current distribution, the presence of another species belonging to the



genus at this point in the Pleistocene on the Iberian Peninsula is unlikely.

Aceraceae

Acer aff. *pseudoplatanus* L. (Plate I, 7–8)

Description: Tr.S.: growth ring boundaries distinct. Diffuse-porous with vessel elements widely spaced, solitary or in small groups (2–4 vessels). Average tangential vessel diameter 45–60 μ . Tyloses in vessels absent. Tg.S.: rays of two distinct sizes, 1–2 seriate and 4–6 (8) seriate. Average multiseriate ray height 500–600 μ , up to 1100 μ . Libriform fibres present. R.S.: distinct spiral thickenings present in narrow and wide vessel elements. Simple perforation plates. Homogeneous rays and intervessel pits alternate.

Identification: The anatomical features of some specimens led to their assignation to the genus *Acer*. According to Schweingruber (1990), *Acer platanoides* and *A. pseudoplatanus* can be differentiated from other *Acer* species by the presence of multiseriate rays 4 to 6 cells wide and, on average, 1 mm high. In all other European species (*A. campestre* L., *A. monspessulanum* L., *A. opalus* Miller and *A. heldreichii* Orph. Ex Boiss.) the rays are smaller. *Acer pseudoplatanus* has an average tangential vessel diameter of 50 μ or greater, an average ray height of up to 1000 μ , and multiseriate rays up to 8 cells wide (Jacquot et al., 1973). According to Jacquot et al. (1973) and García Esteban and Guindeo Casasús (1990), some of the samples examined could be identified as belonging to this taxon.

Acer aff. *campestre* L. (Plate II, 9–10)

Description: Tr.S.: growth ring boundaries distinct, diffuse-porous. Pores widely spaced, solitary or in small groups, commonly 2–4 vessels, radial rows. Average tangential vessel diameter 30–40 μ . Tg.S.: rays 1–3 cells wide, seldomly 4 cells. Average multiseriate ray height 200–300 μ . Distinct uniseriate rays. Rays composed of a single cell type. Libriform fibres present. Fibres non-septate. R.S.: spiral thickenings conspicuous

in all vessels, perforation plates simple. Intervessel pits alternate and vessel-ray pits with distinct borders.

Identification: Some of the samples were assigned to *Acer* aff. *campestre* L.. According to García Esteban and Guindeo Casasús (1990), *A. campestre* L., *A. opalus* Miller and *A. monspessulanum* show the above-mentioned anatomical characteristics. In agreement with Jacquot et al. (1973), non-acute rays 1–5 cells wide plus uniseriate rays frequently formed by square cells, typical characteristics of *A. campestre* L. according to these authors, were seen.

Ulmaceae

Ulmus sp. (Plate II, 11)

Description: Tr.S.: growth ring boundaries distinct, ring-porous. Earlywood with 2 to 3 rows of pores. Vessels arranged in tangential bands or diagonal pattern. Tyloses in vessels occasionally present. Tg.S.: Multiseriate rays 3–5 (6) cells wide, occasionally up to 8. Libriform fibres and vascular tracheids present. R.S.: perforation plates simple. Spiral thickenings conspicuous in vessel elements. Rays homogeneous, occasionally slightly heterogeneous with one row of square marginal cells.

Identification: Some samples showed the typical characteristics of the genus *Ulmus*. However, *Ulmus* species cannot be differentiated on the basis of wood microscopic characteristics (Schweingruber, 1990; García Esteban and Guindeo Casasús, 1990).

Oleaceae

Ligustrum vulgare L. (Plate II, 12–14)

Description: Tr.S.: growth ring boundaries distinct. Semiring to diffuse-porous. Pores generally solitary, mainly distributed in the earlywood. In the latewood, vessels in small groups (2–3 elements) are occasionally seen. Average tangential vessel diameter in earlywood 40–50 μ , 20–30 μ in the latewood. Tg.S.: rays generally biseriate, although uniseriate rays also frequent. Average ray height 300–500 μ . R.S.: rays conspicuously heterogeneous, with 1 to 4 rows of marginal cells. Spiral thickenings in vessel elements. Simple perforation plates. Fibre-tracheids present.

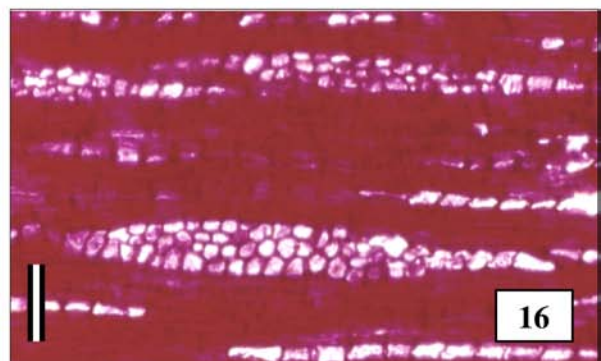
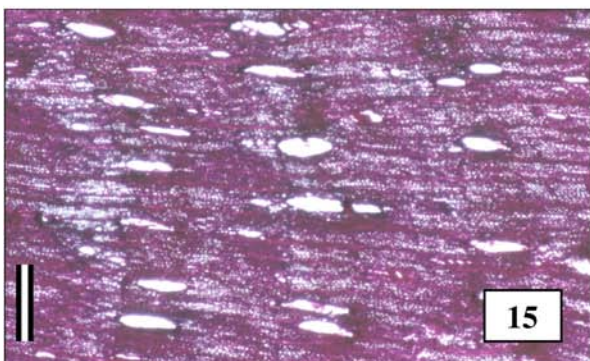
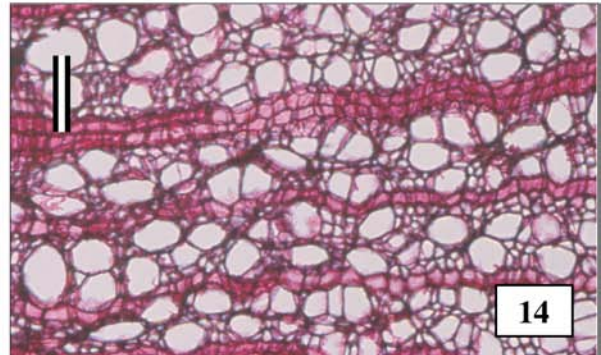
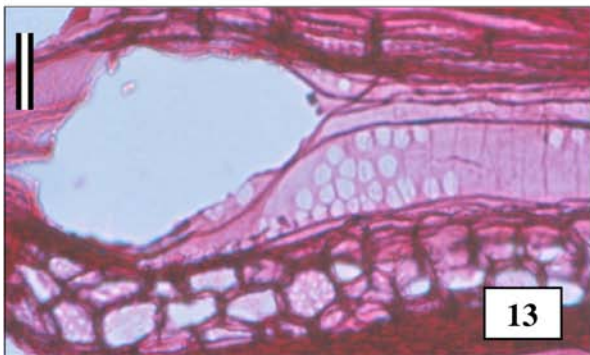
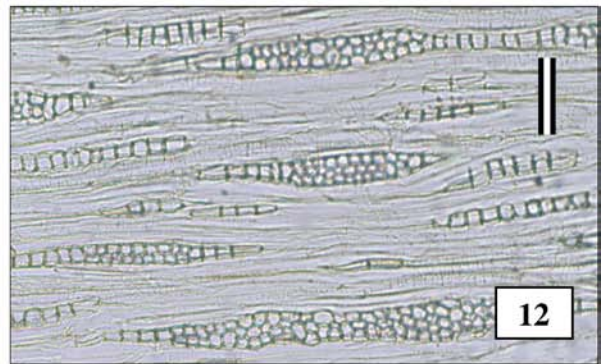
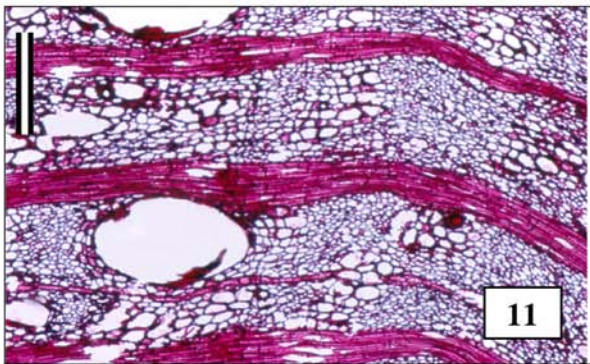
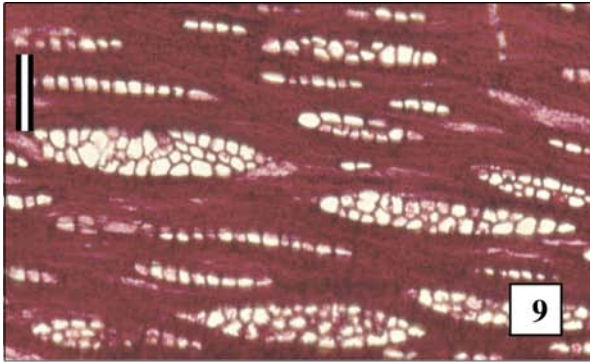
Plate I

1. CAL631: Transversal section. *Quercus* subgenus *Quercus*. Pore size transition from the early- to the latewood zones abrupt. Scale bar=200 μ m.
2. CAL1166: Tangential section. *Quercus* subgenus *Quercus*. Rays uni- to multiseriate. Scale bar=100 μ m.
3. CAL1235: Transversal section. *Aesculus* sp. Rings marked with diffuse porous isolated elements or in small radial groups. Scale bar=100 μ m.
4. CAL1235: Tangential section. *Aesculus* sp. Uniseriate homogeneous rays. Scale bar=75 μ m.
5. CAL1235: Radial section. *Aesculus* sp. a. Simple perforation plate. b. Vessel with inter-vessel pits in which the fine spiral thickenings can be observed. Scale bar=20 μ m.
6. CAL950: Radial section. *Aesculus* sp. Detail of vessel with spiral thickenings. Scale bar=10 μ m.
7. CAL1563: Transversal section. *Acer* aff. *pseudoplatanus*. Diffuse-porous with vessel elements, solitary or in small groups. Scale bar=100 μ m.
8. CAL1563: Tangential section. *Acer* aff. *pseudoplatanus*. Distinct spiral thickenings present and multiseriate ray. Scale bar=50 μ m.

Identification: Some specimens showed features typical of the genus *Ligustrum* L. Their anatomical characteristics led to their identification as *Ligustrum vulgare* L. (Greguss, 1959; García Esteban and Guindeo Casasús, 1990).

Fraxinus aff. *angustifolia* Vahl. (Plate II, 15–16)

Description: Tr.S.: ring-porous. Pores generally solitary. Average tangential vessel diameter 120–140 μ . Paratracheal parenchyma, vascentric and confluent.



Sometimes there are distinct bands of parenchyma. Tg.S.: rays multiseriate, 3–4 cells wide. Spiral thickenings absent. Tyloses present in vessels. R.S.: rays homogeneous, occasionally heterogeneous with one row of square marginal cells. Simple perforation plates. Libriform and septate fibres present.

Identification: The characteristics of some samples led to their identification as members of the genus *Fraxinus*. However, assignment to species was difficult because of the strong uniformity in wood anatomy shown by *Fraxinus* species, and because of the decay and strong compression shown by the specimens. The single row of pores in the earlywood and the presence of septate fibre are, however, characteristic of *F. angustifolia* Vahl. The samples also showed tangential bands of parenchyma and multiseriate rays 3–4 cells wide, also typical of *F. angustifolia* Vahl. (Schweingruber, 1990).

Caprifoliaceae

Viburnum opulus L. (Plate III, 17–18)

Description: Tr.S.: diffuse porous. Pores generally solitary, very rarely in small groups. Vessels uniform in size over the entire growth ring. Average tangential vessel diameter 40–50 μ . Tg.S.: rays (1) 2–3 cells wide. Average ray height 250–400 μ , up to 600 μ . Average ray width 20–30 μ . R.S.: scalariform perforation plates with more than 20 bars. Rays distinct, heterogeneous with several rows of upright marginal cells. Fibre tracheids present. Spiral thickenings absent.

Identification: The anatomical features of some specimens strongly suggested they belonged to *Viburnum opulus* L. The lack of spiral thickenings in vessel elements or fibre-tracheids is typical of this species. *Viburnum lantana* L. and *V. tinus* L. show this anatomical characteristic (Schweingruber, 1990). In addition, *V. tinus* L. has smaller pores.

Cornus sanguinea L. (Plate III, 19–20)

Description: Tr.S.: growth ring boundaries distinct. Diffuse porous. Vessels generally solitary, uniform in size over the entire growth ring. Tyloses occasionally present. Average tangential vessel diameter 70–80 μ .

Tg.S.: rays uniseriate or multiseriate, 3–5 cells wide. Average uniseriate ray height 180–230 μ ; average multiseriate height rays 400–600 μ . Spiral thickenings absent. R.S.: fibre-tracheids present. Scalariform perforation plates with more than 15 bars. Distinct heterogeneous, multiseriate rays with 1 to 3 rows of upright marginal cells.

Identification: Two samples were assigned to the genus *Cornus*. The presence of distinct growth boundaries and thin-walled fibre-tracheids identified them as *C. sanguinea* L. (Schweingruber, 1990).

Salicaceae

Salix sp. (Plate III, 21–22)

Description: Tr.S.: growth ring boundaries distinct and diffuse porous. Vessels commonly in small groups of 2–4 (6) elements, sometimes grouped in radial rows. Tg.S.: uniseriate, seldom biseriate rays. R.S.: distinct heterogeneous rays with 1 to 2 rows of square and upright cells. Large, simple ray-vessel pits. Simple perforation plates and libriform fibres present. Spiral thickening in vessel elements absent.

Identification: Some samples were identified as belonging to the genus *Salix*. No identification at the species level was possible; *Salix* species cannot be distinguished from one other on the basis of their wood anatomy (Schweingruber, 1990).

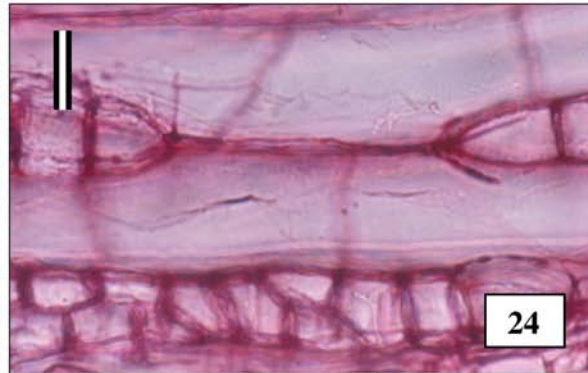
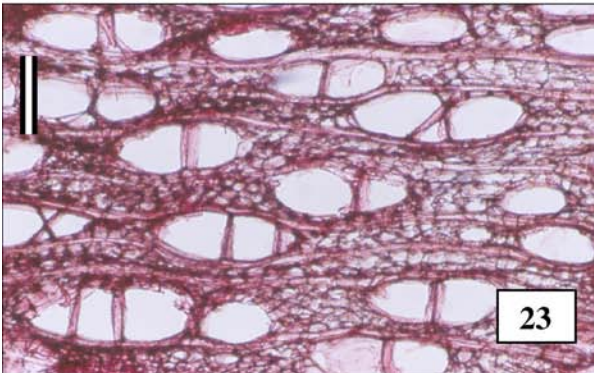
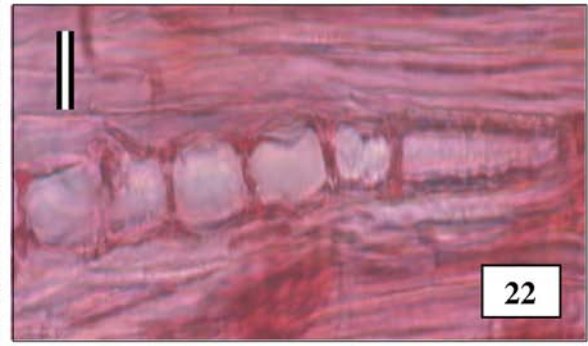
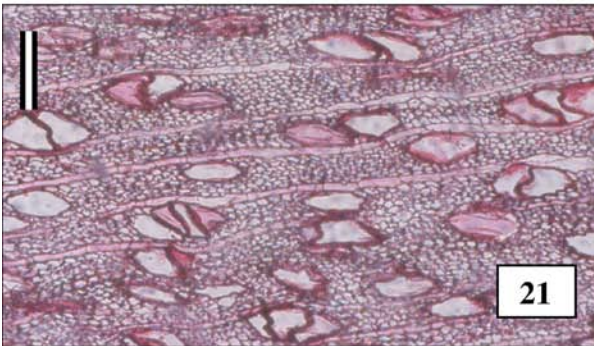
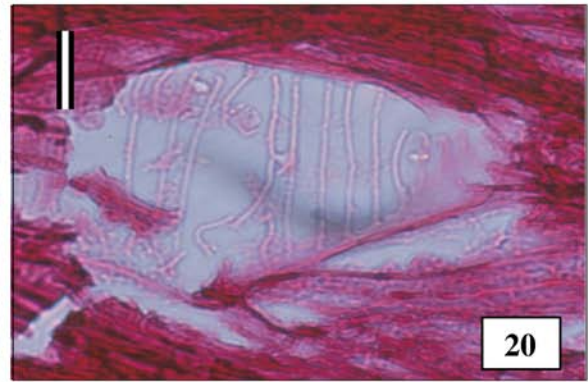
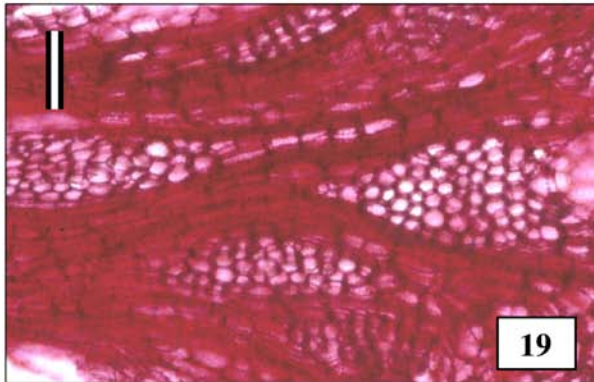
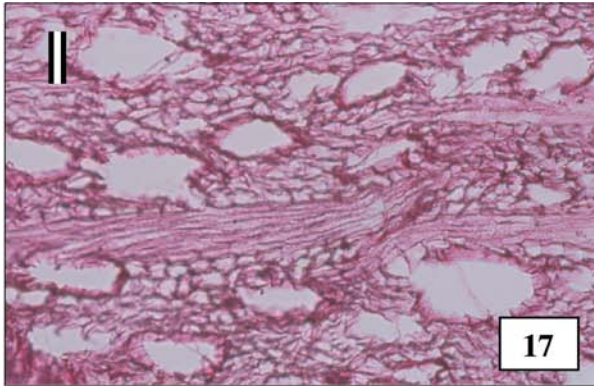
Populus sp. (Plate III, 23–24)

Description: Tr.S.: growth ring boundaries distinct. Diffuse porous with a large number of pores either solitary or in radial groups of 2–3 (sometimes 4) vessels. Tg.S.: uniseriate, seldom biseriate, homogeneous rays. Libriform fibres present, tyloses occasionally present. R.S.: spiral thickenings absent in vessel elements. Simple perforation plates and large ray vessel pits.

Identification: Some samples were assignable to the genus *Populus* (Jacquot et al., 1973; García Esteban and Guindeo Casasús, 1990; Schweingruber, 1990). Identification at the species level was not possible due to the lack of known diagnostic characteristics.

Plate II

9. CAL1592: Tangential section. *Acer* aff. *campestre*. Rays 1–3 cells wide, seldom 4 cells. Scale bar=50 μ m.
10. CAL450: Radial section. *Acer* aff. *campestre*. Spiral thickenings conspicuous and simple perforation plate. Scale bar=10 μ m.
11. CAL1301: Transversal section. *Ulmus* sp. Vessels arranged in tangential bands or diagonal pattern. Scale bar=150 μ m.
12. CAL62: Tangential section. *Ligustrum* cf. *vulgare*. Rays conspicuously heterogeneous. Scale bar=20 μ m.
13. CAL62: Radial section. *Ligustrum* cf. *vulgare*. Distinct spiral thickenings in vessel and simple perforation plate. Scale bar=20 μ m.
14. CAL62: Transversal section. *Ligustrum* cf. *vulgare*. Pores generally solitary or in small groups. Scale bar=75 μ m.
15. CAL274: Transversal section. *Fraxinus* cf. *angustifolia*. Ring-porous and pores generally solitary. Scale bar=200 μ m.
16. CAL274: Tangential section. *Fraxinus* cf. *angustifolia*. Rays multiseriate, 3–4 cells wide. Scale bar=50 μ m.



The area appears to have been home to a river or river-marsh ecosystem with a variety of plant environments. The dominant species of the river habitat were the aquatic macrophytes, including *Typha–Sparganium*, cf. *Phragmites* (Poaceae with a diameter <15 µ), *Myriophyllum*, *Sagittaria*, *Potamogeton*, *Alisma*, *Utricularia*, *Lemna*, *Polygonum* and *Nuphar*. A first and second riparian bands were detected, probably with taxa such as *Tamarix*, *Populus*, *Salix*, *Fraxinus*, *Sambucus*, *Viburnum*, *Cornus*, *Ligustrum* and *Ulmus*. In addition, a meso-hygrophilous forest developed over damp soils near the river. The foremost taxa in this broad-leaved deciduous forest were *Quercus* subgenus *Quercus*, *Acer* (*A. pseudoplatanus* type and *A. campestre* type) and *Carpinus*. Among the trees in the immediate surroundings of the site were the mesocratic *Aesculus*, *Platanus*, *Carya*, *Juglans* and *Celtis*. The presence of these species provides valuable palaeoecological information for the interpretation of the palaeoenvironment and palaeoclimate.

Away from the riverside, on the sunny slopes and in the drier parts of the fossilization site, a Mediterranean shrubland and forest vegetation developed. In this type of more or less open community, fragmented patches of *Quercus* were dominant. A characteristic group of Mediterranean taxa was present, including the genera *Phillyrea*, *Pistacia*, *Cistus*, Thymeleaceae and *Chamaerops*-type. Coniferous taxa such as *Pinus* and Cupressaceae were also present. Grasslands with members of the family Poaceae, including *Lygeum*, and Asteraceae, Chenopodiaceae, Amaranthaceae and Brassicaceae, were dominant in open dry areas, and were the main components of the herbaceous vegetation.

Finally, in the highest areas with higher levels of precipitation and a cooler climate, a *Betula–Abies–Pinus sylvestris*-type forest was established. These taxa may also have grown at lower altitudes where similar climatic conditions were present. Taxodiaceae may also have been present along the moist river margins of the riparian forest, or at higher altitudes with continuously high moisture levels. In these higher areas, there was no markedly dry summer and a mixed *Betula–Abies–Pinus–Taxodiaceae* forest would have existed.

5.1.1. The Taxodiaceae family

The disappearance of Taxodiaceae from Europe is probably related to the climatic changes of the Pliocene–Pleistocene, although the reasons for its complete extinction are unknown. Pronounced thermal contrasts or interspecific competition may have had an influence on its members' distributions. However, the family's demanding water requirements (Fauquette

et al., 1998) were probably the most important cause of their decline; certainly, Quaternary climatic oscillations gave rise to changes in air and soil moisture levels which could have encouraged their demise. The ensuing summer droughts may have had a profound effect on hygrophilous taxa belonging to family Taxodiaceae and other Tertiary relicts in the Mediterranean area.

According to Zagwijn (1974), in the Netherlands the extinction of the Taxodiaceae took place at the Reuverian–Praetiglian boundary. In central and southern Europe, the family disappeared somewhat later. Thus, Taxodiaceae pollen is recorded in the Pliocene–Pleistocene and lower Pleistocene sites of Fornace Tini, Rio Ferraio, Piedrafitta and Stirone (Lona et al., 1969; Lona and Bertoldi, 1972) is considered by some authors to mark the Plio–Pleistocene boundary “the Tiberian boundary” (Lona et al., 1969). According to Michaux et al. (1979), this family disappeared from central Italy in the Early Pleistocene.

In France, the distribution of the Taxodiaceae was drastically reduced during the Pliocene–Pleistocene transition, although its members existed in the lower Pleistocene in different regions of the Massif Central, e.g., in the Velay and Mont Dore lower Pleistocene sites, where these taxa are recorded for some episodes (Brun, 1976). They were also present in the Bourgogne region in the middle Tiglien (Jan Du Chene, 1976).

Although in Europe Taxodiaceae occurs in the lower Pleistocene record, this family is exclusively related to the Tertiary series in the Iberian record. The earliest pollen and macroremains date from the lower Miocene (Fernández Marrón and Álvarez Ramis, 1988; Barrón and Diéguez, 2001). During the Pliocene, a significant reduction in their populations took place, although it is still possible to find fossils in the Iberian record. The occurrence of Taxodiaceae pollen in the northeastern Iberian Peninsula (Suc and Cravatte, 1982; Suc, 1997) and Pampilhosa do Botao (where *Sequoia*, *Taxodium* and *Sciadopitys* pollen has been recorded) is noteworthy (Diniz, 1972). Moreover, a leaf impression fossil of Taxodiaceae has been identified at the Lepe Pliocene site (Barrón et al., 2003). Finally, wood of the Taxodiaceae genera *Sequoia* and *Cryptomeria* or *Cunninghamia* has been recorded in the northern Iberian Peninsula (Alcalde Olivares et al., 2004).

The appearance of Taxodiaceae pollen in the lower–middle Pleistocene site of Cal Guardiola is significant: this is its first mention for the Iberian Pleistocene record and is one of its latest occurrences in the European Pleistocene record. Huard (1965) indicated the possibility of a continuous Taxodiaceae forest in the Pyrenees during

the Miocene. If this were so, the family may have been continuously present from the Miocene to the lower–middle Pleistocene in the northern Iberian Peninsula. This area of Spain may therefore be one of the most interesting for the palaeoecological and palaeogeographical study of this family with respect to the European Cenozoic period.

5.1.2. Palaeoclimatic reconstruction of the Cal Guardiola site

The Cal Guardiola site was home to a noteworthy group of thermo-hygrophilous and meso-hygrophilous taxa such as *Carya*, *Platanus*, *Juglans*, *Aesculus* and *Carpinus*. The pollen grains and macrofossils of these species suggest a low representation in the broad-leaved forest of the area, although the group was relatively well diversified. The finding of *Carya* represents its latest occurrence in the fossil record of the Iberian Peninsula. Previously, *Carya* has been recorded at the lower Pleistocene sites of Bañolas (Julià and Suc, 1980; Leroy, 1987), Crespiá (Roiron, 1983), Dosquers (De Deckker et al., 1979), and Mas Miguel and Mas Grill (Geurts, 1977). The present results provide the only record of the genus *Aesculus* for the Iberian Peninsula. This reference is also one of the most recent for the genus in Europe, before the radical reduction in its distribution to the Balkans (Postigo Mijarra, 2003). In addition, this is the first reference for this genus in Europe based on the microscopic characteristics of wood.

The above-mentioned taxa are well represented in the European Neogene series. They form part of the deciduous, mesophilous communities characteristic of the warm-temperate episodes of the Pliocene and lower-Pleistocene (Zagwijn, 1967; Renault-Miskovsky and Girard, 1978; Maley, 1980; Urban et al., 1983; Van der Burgh, 1983; Bertoldi et al., 1989; Mariotti Lippi, 1989; Ravazzi and Rossignol, 1995; Ferguson and Knobloch, 1998; Van der Burgh and Zetter, 1998). The appearance of this group of species in the Iberian Pleistocene record is, however, very rare (Geurts, 1979; García Antón, 1992; Leroy, 1997). Its presence at Cal Guardiola suggests a warm-temperate episode.

The presence of the mesocratic taxa Taxodiaceae and *Pinus haploxyton*-type in the lower–middle Pleistocene at Cal Guardiola confirms the importance of the Peninsula as a refuge area. The survival of Tertiary taxa in the Iberian Peninsula over long periods during the Pleistocene is supported by numerous studies (García Antón et al., 1990; Carrión and Sánchez-Gómez, 1992; Martínez-Atienza and Morla, 1992; Morla, 1996; Costa Tenorio et al., 1997; Carrión et al., 2003; Postigo Mijarra, 2003).

5.2. Comparisons with other Pleistocene sites of the Iberian Peninsula and neighbouring areas of Europe

The age of the Cal Guardiola site renders it comparable to others of the Iberian Peninsula. Its chronology is comparable with that of the Gran Dolina deposit of the lower–middle Pleistocene Atapuerca site (García Antón, 1989, 1992; Parés and Pérez González, 1995). The pollen diagram for the latter site shows high percentages of deciduous and evergreen *Quercus*, although *Pinus* and Cupressaceae may have existed in large numbers in certain phases. In the lower Pleistocene TD2 stage, deciduous *Quercus* appeared, but a cold, dry climate became established and *Artemisia*, *Betula*, *Pinus* and Cupressaceae became more significant. In TD4, there was a high percentage of arboreal taxa, e.g., *Pinus* and *Quercus*. It should be noted that a major group of taxa such as *Fagus*, *Betula*, *Juglans* and *Olea* was also present during this phase. A transition period between a warmer and a colder climate is inferred. Both the Cal Guardiola and Atapuerca sites have similar floral patterns: a high percentage of mesophilous taxa and a dominant *Quercus*–*Pinus* mixed forest. The presence of Taxodiaceae and *Pinus haploxyton*-type taxa in the Cal Guardiola site is, however, a remarkable difference. Further, mesocratic taxa are well represented in the Cal Guardiola deposit (quite different from that seen at the Atapuerca site); particularly noteworthy is the first citation of *Aesculus* for the Iberian Peninsula.

The Cal Guardiola site can also be compared with the Buenavista Superior sequence, dated just after the Matuyama-Bruhnes boundary during isotopic Stage 19 (Martín-Arroyo, 1998). In Zone I of the Buenavista site an evergreen *Quercus*–*Olea* forest with Ericaceae and *Juniperus* is represented, but at the beginning of the middle Pleistocene (zones IIa and IIb) a Mediterranean evergreen *Quercus*–*Olea* forest is again seen. Species such as *Salix*, *Juglans*, *Ulmus*, *Alnus* and *Pinus* occur throughout the pollen diagram. Buenavista shows a more typical Mediterranean community than Cal Guardiola, which lacks a well-developed thermohygrophilous group. Neither Taxodiaceae nor *Pinus haploxyton*-type are represented in the Buenavista pollen diagram.

The assemblages of the lower–middle Pleistocene sites of the northern Iberian Peninsula strongly resemble those of the Cal Guardiola site. The lower Pleistocene Molli Vell deposit (Geurts, 1977, 1979; De Deckker et al., 1979) includes three phases showing a continuous *Pinus* forest and a strong presence of deciduous *Quercus*. Occasional meso-thermohygrophilous species such as *Carya*, *Juglans*, *Castanea*, *Carpinus* and *Ostrya* were also present. Similarly, a *Pinus*–*Quercus* forest developed at the lower Pleistocene Mas Grill site (Geurts, 1977, 1979). Meso-

thermohygrophilous taxa including *Fagus*, *Ostrya*, *Carya* and *Juglans* are also represented. Both deposits show a Mediterranean coniferous-broadleaved mixed forest with the presence of Tertiary species, some of which persist in central-eastern Mediterranean refuges. Nevertheless, the Cal Guardiola site has a higher diversity of mesocratic species, and a notable presence of Taxodiaceae and *Pinus haploxylon*-type. The presence of *Aesculus* at Cal Guardiola is an equally significant distinction. In addition, Cal Guardiola stands out for the large quantity and wide diversity of its recorded materials compared to these other sites. It is worth emphasizing the importance of the information inferred from the Cal Guardiola assemblage, which is essential for understanding the development of the Pleistocene flora in the Iberian Peninsula.

With respect to other Western European sites, Cal Guardiola can be compared to the Waalian site at La Vallonnet (Renault-Miskovsky and Girard, 1978) in the Maritime Alps. The pollen sequence of the latter site shows a series of different stages belonging to the lower and middle Pleistocene. The lowermost part of the section reflects a dense, mixed forest (55–75% AP). *Pinus diploxylon*-type species were accompanied by Mediterranean deciduous taxa belonging to the genera *Quercus*, *Ligustrum*, *Fraxinus*, *Salix*, *Ulmus* and to the Oleaceae. Thermophilous trees including *Aesculus*, *Juglans*, *Pterocarya*, *Carpinus* and *Platanus* are also represented. According to the above authors, the pollen record reveals a temperate-warm and dry climate. The Cal Guardiola site has evident similarities. The Waalian-Menapian Mont-Dore (Brun, 1976) deposit also bears some floristic resemblance to Cal Guardiola. The former shows evidence of a *Quercus* forest with other broadleaved trees such as *Ulmus*, *Betula*, *Tilia* and *Corylus*, with conifers also well represented. Finally, the Saint-Martial site has analogous flora (Suc, 1976).

The lower-Pleistocene sites of northern and central Europe show different assemblages to those of the Mediterranean peninsulas. In colder times, the percentage of mesocratic species decreased severely in all parts of Europe (they eventually disappeared completely) to the benefit of steppe species (Elhaï, 1969; Suc, 1978; Leroy, 1990; Ablin, 1991). After analysis of the 81/26 deposit located in the North Sea, Ekman (1999) suggested a cold-adapted, hygrophilous flora. According to Leroy et al. (1994), latitudinal and altitudinal differences might explain these differences. In Southern Europe, thermohygrophilous taxa were relatively common during the lower and the lower–middle Pleistocene. A good series of them can be seen in Italy at Fornace Tini (Urban et al., 1983), in the Lefte Basin (Ravazzi and Rossignol, 1995), and at the Rio Ferraio, Piedrafitta and Stirone sites (Lona

and Bertoldi, 1972). Similar results have been obtained at other sites in France, e.g., Bresse (Jan Du Chene, 1976), Saint-Martial, and Durfort (Suc, 1976).

Acknowledgements

This paper is dedicated to the memory of our friend and colleague Javier Maldonado, who passed away in August 2004. This work was possible thanks to the *Departament de Cultura de la Generalitat de Catalunya*, *Ajuntament de Terrassa*, *Mútua de Terrassa*, and the *Institut Cartogràfic de Catalunya*. Thanks are owed to Rafael Mora and Salvador Moyà for their continuous assistance. This work was performed as part of the research project PALEODIVERSITAS I Projet (Plan Nacional I+D, CGL 2006-02956-BOS).

References

- Ablin, D., 1991. Analyse pollinique des dépôts lacustres de Ceyssac, Pléistocène du Velay (Massif Central, France). Cah. Micropaléontol. 6 (1), 21–38.
- Alcalde Olivares, C., García Antón, M., Gómez Manzaneque, F., Morla Juaristi, C., 2004. Palaeoenvironmental interpretation of the Neogene locality Caranceja (Reocín, Cantabria, N Spain) from comparative studies of wood, charcoal, and pollen. Rev. Palaeobot. Palynol. 132, 133–157.
- Andrade, M.M., 1944. Estudo polínico de algumas formações turfólicas portuguesas. Publ. Mus. Lab. Min. Geol. Fac. Cie'nc. Porto 2^a sér. (XXXVII), 5–11.
- Antunes, M.T., Mein, P., Nascimento, A., Pais, J., 1986. Le gisement pleistocène de Morgadinho, en Algarve. Ciênc. terra 8, 9–22.
- Barrón, E., Diéguez, C., 2001. Estudio macroflorístico del Mioceno Inferior lacustre de la Cuenca de Rubielos de Mora (Teruel, España). Bol. Geol. Min. 112 (2), 13–56.
- Barrón, E., Muñoz, F., Mayoral, E., 2003. Aspectos macroflorísticos del Plioceno de Lepe (cuenca del Guadalquivir, Huelva, España). Consideraciones paleoecológicas. Bol. R. Soc. Esp. Hist. Nat. (Sec. Geol.) 98 (1–4), 91–109.
- Berástegui, X., Casanovas, J., Moyà, S., 2000. El jaciment paleontològic de Cal Guardiola. Una finestra oberta al pliocè inferior de Catalunya. Contextualització geològica. Tribuna d'Arqueologia 1997–1998, 255–277.
- Bertoldi, R., Río, D., Thunell, R., 1989. Pliocene–Pleistocene vegetational and climatic evolution of the south central Mediterranean. Palaeogeography, Palaeoclimatology, Palaeoecology 72, 263–275.
- Burjachs, F., 1990. Palinologia dels dòlmens de l' Alt Empordà i dels dipòsits quaternaris de la cova de l' Arbreda (Serinyà, Pla de l' Estany) i del Pla de l' Estany (Olot, Garrotxa). Evolució del paisatge vegetal i del clima des fa més de 140.000 anys al N.E. de la Península Ibèrica. Microfitxes (1991). Publicacions de la Universitat Autònoma de Barcelona.
- Burjachs, F., in press. Informe palinològic del jaciment de Cal Guardiola (Terrassa, Vallès Occidental). Servei d'Arqueologia de la Generalitat de Catalunya. Barcelona.
- Burjachs, F., López-Sáez, J.A., Iriarte, M.J., 2003. Metodología arqueopalínologica. In: Buxó, R., Piqué, R. (Eds.), La recogida de muestras en arqueobotánica: objetivos y propuestas metodológicas. Museu d' Arqueologia de Catalunya, Barcelona, pp. 11–18.

- Brun, A., 1976. La végétation au Pléistocène inférieur dans le Massif Central. Les civilisations néolithiques et protohistoriques, t.1, Ed. C.N.R.S., 476–479.
- Carrion, J.S., Sánchez-Gómez, P., 1992. Palynological data in support of the survival of Walnut (*Juglans regia* L.) in the western Mediterranean area during last glacial times. *J. Biogeogr.* 19, 623–630.
- Carrion, J.S., Yll, E.I., Legaz, A.J., Chaín, C., López, A., 2003. Glacial refugia of temperate, Mediterranean and Ibero–North African flora in south-eastern Spain: new evidence from cave pollen at two Neanderthal sites. *Global Ecology and Biogeography* 12 (2), 119–129.
- Costa Tenorio, M., Morla Juaristi, C., Sainz Ollero, H. (Eds.), 1997. Los bosques ibéricos: una interpretación geobotánica. Planeta, Barcelona.
- De Deckker, P., Geurts, M.A., Julià, R., 1979. Seasonal rhythmicities from a lower pleistocene lake in northeastern Spain. *Palaeogeography, Palaeoclimatology, Palaeoecology* 26, 43–71.
- De Palacios, P., 1997. Anatomía de géneros y especies de coníferas del hemisferio norte. Universidad Politécnica de Madrid, E.T.S.I. Montes. Tesis Doctoral. Madrid.
- Diniz, F., 1972. Notas palinológicas sobre formações cenozoicas portuguesas. *Bol. Mus. Lab. Mineral. Geol. Fac. Ciênc. Univ. Lisb.* 13 (1), 83–95.
- Ekman, S.R., 1999. Early Pleistocene pollen biostratigraphy in the central North Sea. *Rev. Palaeobot. Palynol.* 105, 171–182.
- Elhaï, H., 1966. Deux gisements du Quaternaire moyen. *Bulletin de l'association française pour l'étude du Quaternaire* 6, 69–78.
- Elhaï, H., 1969. La flore sporo-pollinique du gisement villafranchien de Senèze (Massif Central, France). *Pollen Spores* 11 (1), 127–139.
- Fauquette, S., Guiot, J., Suc, J.P., 1998. A method for climatic reconstruction of the Mediterranean Pliocene using pollen data. *Palaeogeography, Palaeoclimatology, Palaeoecology* 144, 183–201.
- Fernández Marrón, M.T., Álvarez Ramis, C., 1988. Note préliminaire sur l'étude paléobotanique du gisement de Rubielos de Mora (Teruel, Espagne). *Résumé Sémin. Paleobot.* 9, 7.
- Ferguson, D.K., Knobloch, E., 1998. A fresh look at the rich assemblage from the Pliocene sink-hole of Willershausen, Germany. *Rev. Palaeobot. Palynol.* 101, 271–286.
- Figueiral, I., Mosbrugger, V., Rowe, N.P., Ashraf, A., Utescher, T., Jones, T.P., 1999. The Miocene peat-forming vegetation of northwestern Germany: an analysis of wood remains and comparison with previous palynological interpretations. *Rev. Palaeobot. Palynol.* 104, 239–266.
- García Antón, M., 1989. Estudio palinológico de los yacimientos mesopleistocenos de Atapuerca (Burgos): reconstrucción paisajística y paleoclimática. Tesis Doctoral. Univ. Autónoma de Madrid, Spain.
- García Antón, M., Morla Juaristi, C., Sainz Ollero, H., 1990. Consideraciones sobre la presencia de algunos vegetales relictos terciarios durante el Cuaternario en la Península Ibérica. *Bol. R. Soc. Esp. Hist. Nat., Secc. Biol.* 86 (1–4), 95–105.
- García Antón, M., Sainz Ollero, H., 1991. Pollen records from the middle Pleistocene Atapuerca site (Burgos, Spain). *Palaeogeography, Palaeoclimatology, Palaeoecology* 85, 199–206.
- García Antón, M., 1992. Paleovegetación del Pleistoceno Medio de Atapuerca a través del análisis polínico. *Actas, Evolución Humana en Europa y los yacimientos de la Sierra de Atapuerca I*, 147–165.
- García Esteban, L., Guindeo Casasús, A., 1990. Anatomía de las maderas de frondosas españolas. A.I.T.I.M., Madrid.
- Geurts, M.A., 1977. Approche palynostratigraphique des dépôts calcaires quaternaires en Catalogne. *Acta Geológica Hispánica* XII (4–6), 86–89.
- Geurts, M.A., 1979. Approche palynostratigraphique des dépôts calcaires quaternaires dans la région de Banyoles–Besalç (Catalogne). *Actas de la IV Reunión del grupo de trabajo del Cuaternario* 106–115.
- Girard, M., Renault-Miskovsky, J., 1969. Nouvelles techniques de préparation en Palynologie appliquées à trios sédiments du Quaternaire final de l'Abri Comille (Istres-Bouches du Rhône). *Bulletin A.F.E.Q.* 4, 275–284.
- Goëury, Cl., Beaulieu, J.L., 1979. À propos de la concentration du pollen à l'aide de la liqueur de Thoulet dans les sédiments minéraux. *Pollen et Spores* XXI (1–2), 239–251.
- Greguss, P., 1947. The identification of central-European dicotyledonous trees and shrubs based on xylotomy. Ed. Hungarian Museum of Natural History, Budapest.
- Greguss, P., 1959. *Holzanatomie der europäischen Laubhölzer und Sträucher*. Ed. Akadémiai Kiadó, Budapest.
- Grimm, E.C., 2004. *Tilia, Tilia-Graph and TGView 2.0.2*. Illinois State Museum, Springfield.
- Gutiérrez Elorza, M. (ed.) 1994. *Geomorfología de España*. Ed. Rueda, Madrid.
- Hatcher, P.G., Clifford, D.J., 1997. The organic geochemistry of coal: from plant materials to coal. *Org. Geochem.* 27, 251–274.
- Hedges, J.I., Cowie, G.L., Ertel, J.W., Barbour, R.J., Hatcher, P.G., 1985. Degradation of carbohydrates and lignins in buried woods. *Geochim. Cosmochim. Acta* 49, 701–711.
- Huard, J., 1965. Contribution à l'étude anatomique des bois du lignite d'Orignac. *Trav. Lab. For. Toulouse* 1 (4(22)), 1–9.
- Huard, J., 1966. Étude anatomique des bois de conifères des couches à lignite néogènes des Landes. *Mém. Soc. Géol. Fr. Nouvelle série* 45 (2 (105)), 5–85.
- Huard, J., 1967. Étude de trois bois de lauracées fossiles des formations à lignite néogènes d'Arjuzanx (Landes). *Rev. Gen. Bot.* 74 (873), 81.
- Huard, J., 1974. Premiers résultats de l'étude paléobotanique des couches à lignite néogènes des Landes (France). *Mém. BRGM* 2 (78), 509–512.
- Huard, J., Lavocat, R., 1963. Sur la découverte de fossiles dans les formations à lignite d'Arjuzanx (Landes) et leur signification stratigraphique. *C.R. Acad. Sci., Paris* 257, 3979–3980.
- Huard, J., Klingebiel, A., 1965. Recherches paléobotaniques et sédimentologiques sur les couches à lignite d'Arjuzanx (Landes). *Bull. Soc. Borda* 317, 77–83.
- Jan Du Chene, R., 1976. La végétation au Pléistocène inférieur en Bourgogne. *La Préhistoire française*, tome I₁, 481–482.
- Jacquot, C., Trenard, Y., Dirol, D., 1973. *Atlas d'anatomie des bois des angiospermes (essences feuilles)*. Centre technique du bois, Paris.
- Julià, R., Suc, J.-P., 1980. Analyse pollinique des dépôts lacustres du Pléistocène Inférieur de Banyoles (Baños, site de la Bòbila Ordis-Espagne: un élément nouveau dans la reconstitution de l'histoire paléoclimatique des régions méditerranéennes d'Europe occidentale). *Geobios* 13 (1), 5–19.
- Julià, R., Villalta, J.F., 1984. El yacimiento de vertebrados del Pleistoceno Inferior de Crespià (Girona, NE de la Península Ibérica). *Acta Geológica Hispánica* 19, 129–138.
- Kilpper, K., 1967. Die Koniferen des niederrheinischen Tertiärs. *Sonderveröff. Geol. Inst. Univ. Köln* 13, 43–53.
- Kilpper, K., 1968a. Koniferenzapfen aus den tertiären Deckschichten des Niederrheinischen Hauptflözes. *Palaeontogr., Abt. B* 121 (4–6), 159–168.
- Kilpper, K., 1968b. Koniferenzapfen aus den tertiären Deckschichten des Niederrheinischen Hauptflözes: 2. Teil, Genus *Pinus* L. *Palaeontogr., Abt. B* 123 (1–6), 213–220.
- Kilpper, K., 1968c. Koniferenzapfen aus den tertiären Deckschichten des Niederrheinischen Hauptflözes: 3. Taxodiaceae und Cupressaceae. *Palaeontogr., Abt. B* 124 (4–6), 102–111.

- Leroy, S., 1987. Analyse palynologique de deux nouvelles sections du Pléistocene Inférieur de Banyoles (Catalogne). *Actas de Palinología* 307–313.
- Leroy, S., 1990. Paléoclimats plio-pléistocènes en Catalogne et Languedoc d'après la palynologie de formations lacustres. PhD Thesis. Univ. Cathol. Louvain, Belgium.
- Leroy, S., 1997. Climatic and non-climatic lake-level changes inferred from a Plio-Pleistocene lacustrine complex of Catalonia (Spain): palynology of the Tres Pins sequences. *J. Paleolimnol.* 17, 347–367.
- Leroy, S., Ambert, P., Suc, J.-P., 1994. Pollen record of the Saint-Macaire maar (Hérault, southern France): a lower Pleistocene glacial phase in the Languedoc coastal plain. *Rev. Palaeobot. Palynol.* 80, 149–157.
- Lona, F., Bertoldi, R., Ricciardi, E., 1969. Plio-Pleistocene boundary in Italy based on the Lefiani and Tiberian vegetational and climatological sequences. Final Proc. Colloq. VIII Inqua Congr., Sect. Stratigr. Paris, pp. 573–574.
- Lona, F., Bertoldi, R., 1972. La storia del Plio-Pleistocene italiano in alcune sequenze vegetazionali lacustri e marine. *Memoire Sc. fisiche, Sez. III^a XI (VIII)*, 1–45.
- Maley, J., 1980. Les changements climatiques de la fin du Tertiaire en Afrique: leur conséquence sur l'apparition du Sahara et de sa végétation in The Sahara and the Nile: Quaternary environments and prehistoric occupation in northern Africa. In: Williams, Martin A.J., Hugues Faure, A.A. (Eds.), Balkema, Rotterdam, pp. 63–86.
- Mariotti Lippi, M., 1989. Ricerche palinologiche sul Messiniano di Eraclea Minoa (AG) nel quadro paleofloristico e paleovegetazionale del tardo Miocene italiano. *Webbia* 43 (1), 169–199.
- Martín-Arroyo, T., 1998. Paleoclimatología y paleoambiente durante el Pleistoceno Medio y Superior en el valle del Tajo. Tesis doctoral, Univ. de Alcalá de Henares, Madrid, Spain.
- Martínez-Atienza, F., Morla, C., 1992. Aproximación a la paleoecología holocena de *Fagus* en la península Ibérica a través de datos paleopolínicos. *Investigaciones Agrarias (Fuera de Serie)* 1, 135–145.
- Minnigerode, C., 1986. Holzanatomische Untersuchungen fossiler Wurzelhölzer aus dem Miozän der Niederrheinischen Bucht. *Rev. Palaeobot. Palynol.* 48, 253–268.
- Michaux, J., Suc, J.P., Vernet, J.L., 1979. Climatic inference from the history of the Taxodiaceae during the Pliocene and the early Pleistocene in western Europe. *Rev. Palaeobot. Palynol.* 27, 185–191.
- Moore, P.D., Webb, J.A., Collinson, M.E., 1991. Pollen analysis. Blackwell Scientific Publications, Oxford.
- Morla, C., 1996. Especies forestales autóctonas y alóctonas en la restauración del tapiz vegetal de la Península Ibérica. In: Fernández García (Ed.), Medio Ambiente y Crisis Rural. Valladolid, pp. 33–61.
- Parés, J.M., Pérez González, A., 1995. Paleomagnetic age for hominid fossils at Atapuerca archaeological site, Spain. *Science* 269, 830–832.
- Postigo Mijarra, J.M., 2003. Contribución al conocimiento de la vegetación pleistocena de la península Ibérica. Estudio paleobotánico de macrorrestos vegetales fósiles. Tesis Doctoral, Univ. Autónoma de Madrid, Spain.
- Ravazzi, C., Rossignol, M., 1995. Vegetation change in a climatic cycle of Early Pleistocene age in the Lefiane Basin (northern Italy). *Palaeogeography, Palaeoclimatology, Palaeoecology* 117, 105–122.
- Reille, M., 1995. Pollen et spores d'Europe et d'Afrique du Nord (Supplément 1). Laboratoire de Botanique Historique et Palynologie, CNRS, Marseille.
- Reille, M., 1998. Pollen et spores d'Europe et d'Afrique du Nord (Supplément 2). Laboratoire de Botanique Historique et Palynologie, CNRS, Marseille.
- Reille, M., 1999. Pollen et spores d'Europe et d'Afrique du Nord, Deuxième édition. Laboratoire de Botanique Historique et Palynologie, CNRS, Marseille.
- Renault-Miskovsky, J., Girard, M., 1978. Analyse pollinique du remplissage Pléistocène du Vallonnet (Roquebrune-Cap-Martin, Alpes-Maritimes). *Géologie Méditerranéenne*, tome V (4), 385–402.
- Roiron, P., 1983. Nouvelle étude de la macroflore plio-pleistocène de Crespià (Catalogne, Espagne). *Geobios* 16 (fasc. 6), 687–715.
- Sala, M., 1994. Sistema Costero Catalán. In: Gutiérrez Elorza, M. (Ed.), Geomorfología de España. Ed. Rueda, Madrid, pp. 526.
- Schloemer-Jäger, A., 1960. Koniferen-Zapfen aus der niederrheinischen Braunkohle. *Senckenb. Lethaea* 41 (1–6), 209–253.
- Schopf, J.M., 1975. Modes of fossil preservation. *Rev. Palaeobot. Palynol.* 20, 27–53.
- Schweingruber, F.H., 1978. Mikroskopische Holzanatomie. Zürcher A.G. Zug 226.
- Schweingruber, F.H., 1990. Anatomie europäischer Hölzer. Paul Haupt Bern und Stuttgart.
- Strandhede, S.O., Wihl, J.A., Ericsson, N.E., 1984. Tree Pollen Allergy. *Allergy* 39, 602–609.
- Spicer, R.A., 1991. Plant taphonomic processes. In: Allison, P.A., Briggs, D.E.G. (Eds.), Taphonomy releasing. The data locked in the fossil record. Plenum Press, New York, pp. 71–113.
- Subiza, E., 1980. Incidencia de granos de pólenes en la atmósfera de Madrid. Método volumétrico. *Allergol. Immunopathol. Suppl.* VII.
- Suc, J.-P., 1976. La végétation au Pléistocene inférieur en Languedoc méditerranéen Roussillon et Catalogne. Ed. C.N.R.S. 472–475.
- Suc, J.-P., 1978. Analyse pollinique de dépôts plio-pléistocènes du sud du massif basaltique de l'Escandorgue. *Pollen Spores* 20 (4), 497–512.
- Suc, J.-P., 1997. Quelques taxons-guides dans l'étude paléoclimatique du Pliocène et du Pleistocene inférieur du Languedoc (France). *Rev. Micropaléontol.* 4 (18), 246–255.
- Suc, J.-P., Cravatte, J., 1982. Etude palynologique du Pliocène de Catalogne (Nord-Est de l'Espagne). *Paléobiol. Cont.* XIII, 1, 1–31.
- Teixeira, C., Pais, J., 1976. Introdução a paleobotânica as grandes fases de evolução dos vegetais. Flora cenozoica portuguesa, origem da flora actual. Lisboa.
- Urban, B., Arias, C., Bigazzi, G., Bonadonna, F.P., 1983. Early Pleistocene palynostratigraphy of Fornace Tini, valle Ricca (central Italy). *Palaeogeography, Palaeoclimatology, Palaeoecology* 41, 153–164.
- Van der Burgh, J., 1964. Hölzer der niederrheinischen Braunkohlenformation. I. Hölzer der Braunkohlegrube "Anna" zu Haanrade (Niederländisch Limburg). *Acta Bot. Neerl.* 13, 250–301.
- Van der Burgh, J., 1973. Hölzer der niederrheinischen Braunkohlenformation. 2. Hölzer der Braunkohlegruben "Maria Theresia" zu Herzogenrath, "Zukunft West" zu Eschweiler und Victor (Zülpich Mitte) zu Zülpich. Nebst einer systematisch-anatomischen Bearbeitung der Gattung *Pinus* L. *Rev. Palaeobot. Palynol.* 15, 73–275.
- Van der Burgh, J., 1983. Allochthonous seed and fruit floras from the Pliocene of the Lower Rhine Basin. *Rev. Palaeobot. Palynol.* 40, 33–90.
- Van der Burgh, J., Zetter, R., 1998. Plant mega- and microfossil assemblages from the Brunsumian of "Hambach" near Düren, B. R.D. *Rev. Palaeobot. Palynol.* 101, 209–256.
- Zagwijn, W.H., 1967. Ecologic interpretation of a pollen diagram from Neogene beds in the Netherlands. *Rev. Palaeobot. Palynol.* 2, 173–181.
- Zagwijn, W.H., 1974. The Pliocene–Pleistocene boundary in western and southern Europe. *Boreas* 3, 75–97.